

PK 48002 MH

THE POWER LINK PLUS REPRESENTS HIGHEST LIFTING CAPACITY

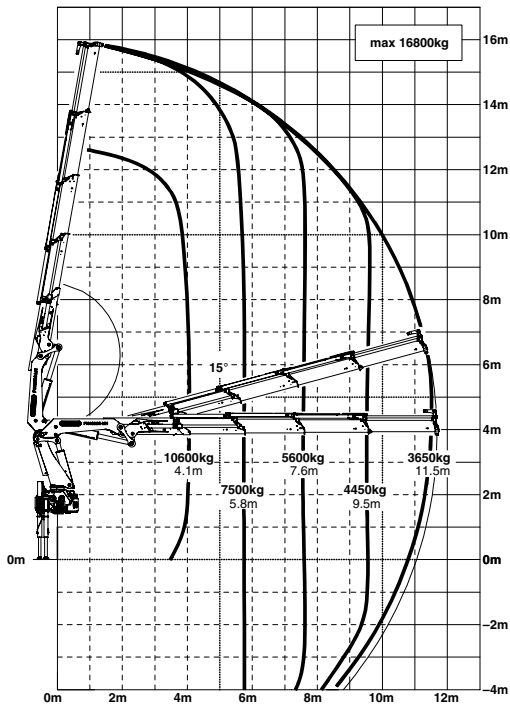
LIFETIME EXCELLENCE



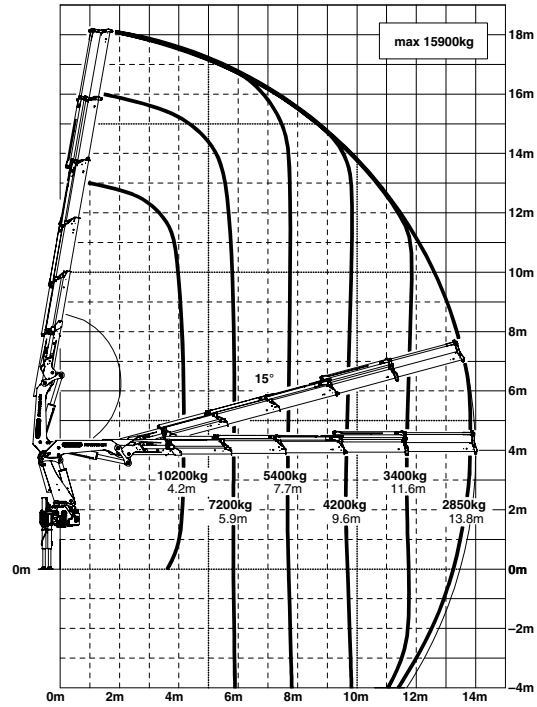
PK 48002 MH

HIGH PERFORMANCE

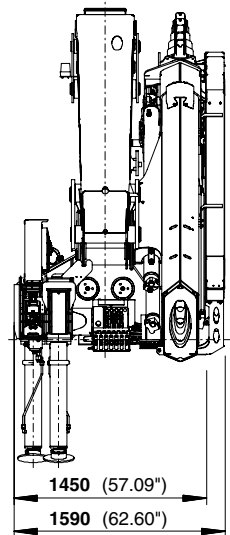
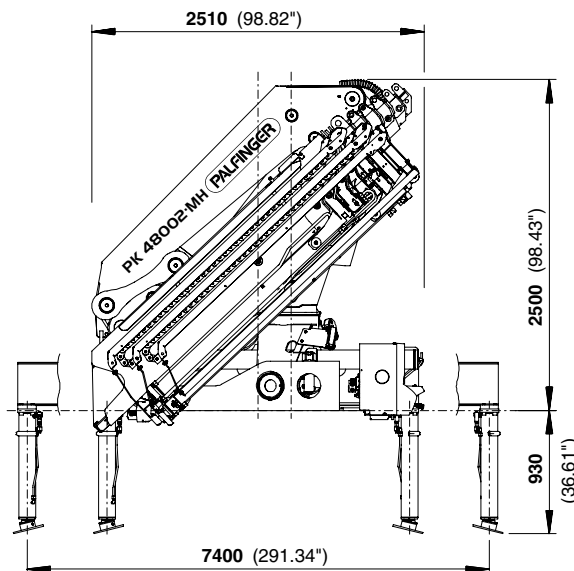
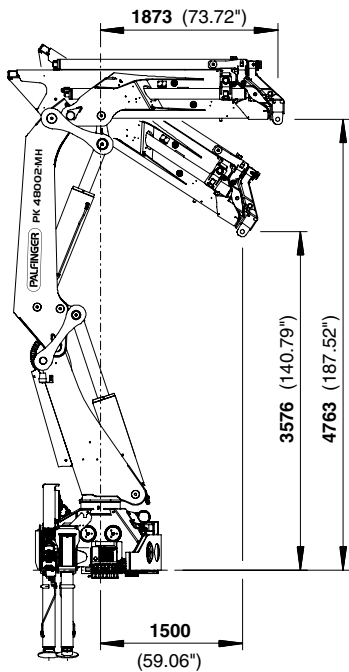
C



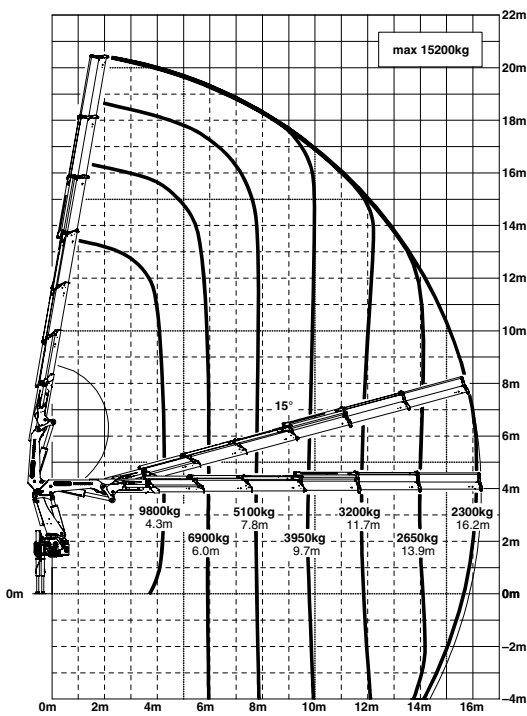
D



DIMENSIONS



E



- Additional applications due to Power Link Plus
- High value retention due to coating technology
- Designed and optimised for Non CE markets
- Increased operating times due to low-maintenance extension system
- Practical and attractive due to Functional Design

Technical specifications

EN 12999 HC1 HD4/B3

Max. lifting moment	46.5 mt/456.3 kNm	336520 ft.lbs
Max. lifting capacity	18300 kg/179.5 kN	40340 lbs
Max. hydraulic outreach	16.3 m	53' 6"
Max. manual outreach	23.3 m	76' 5"
Slewing angle	400°	
Slewing torque	5.5 mt/54.0 kNm	39790 ft.lbs
Stabiliser spread	7.4 m	24' 3"
Fitting space required (min./max.)	1.45 m/1.59 m	4' 9"/5' 3"
Width folded	2.51 m	8' 3"
Max. operating pressure	350 bar	5075 psi
Recommended pump capacity	from 60 l/min to 80 l/min	15.9 US gal./min 21.1 US gal./min
Dead weight (std.)	4420 kg	9740 lbs

KP-HPK48002MHL2+EN

Cranes shown in the leaflet are partially optional equipped and do not always correspond to the standard version. Country-specific regulations must be observed. Dimensions may vary. Subject to technical changes, errors and translation mistakes.