

PK 62002 MH

OPERATORS COUNT ON ITS GOOD POWER TO PERFORMANCE RATIO AND HIGH SLEWING TORQUE

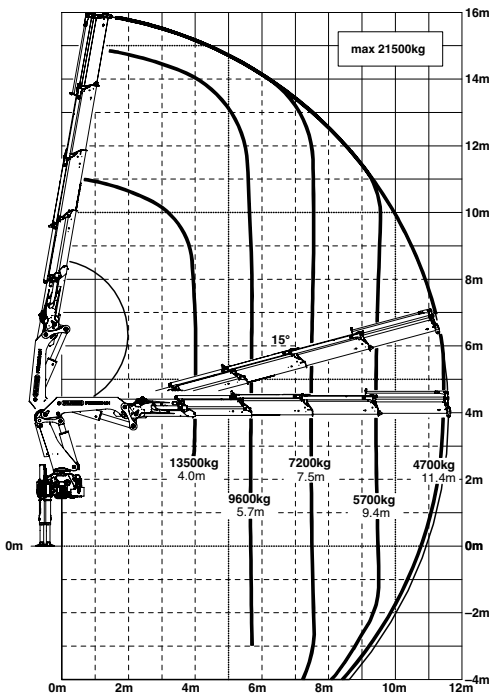
LIFETIME EXCELLENCE



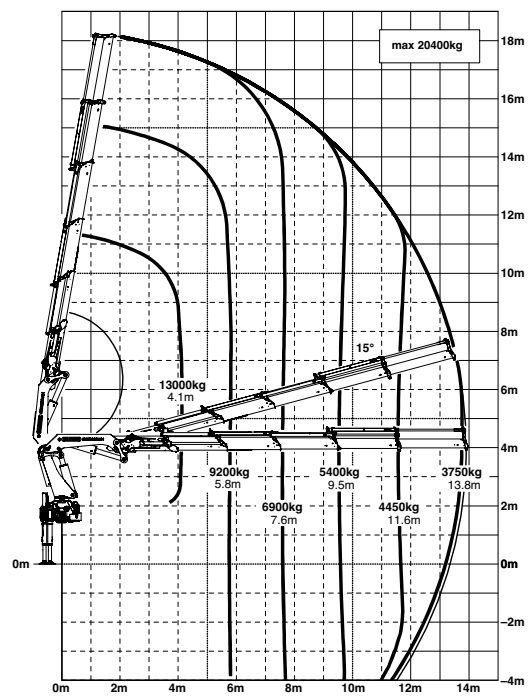
PK 62002 MH

HIGH PERFORMANCE

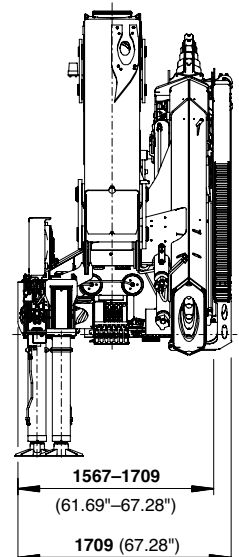
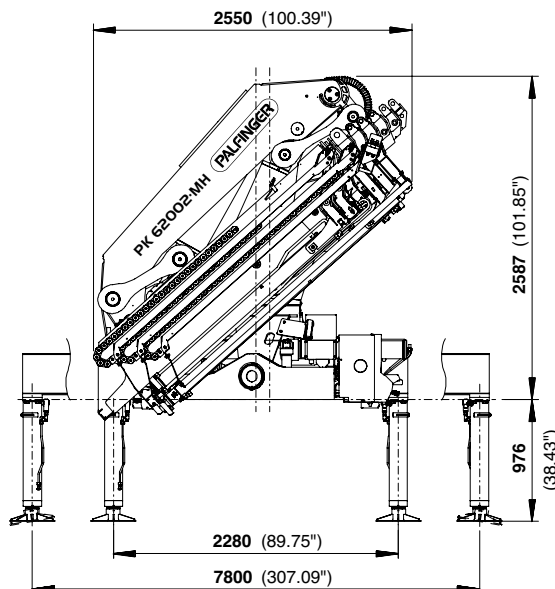
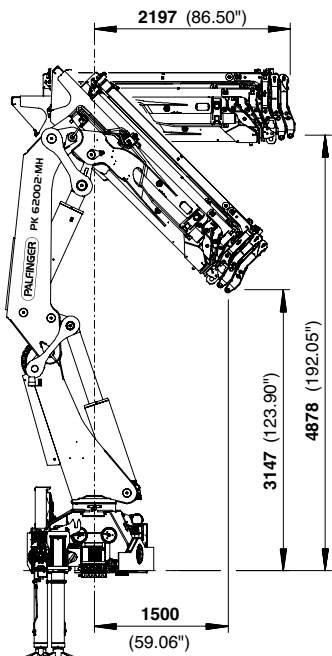
C



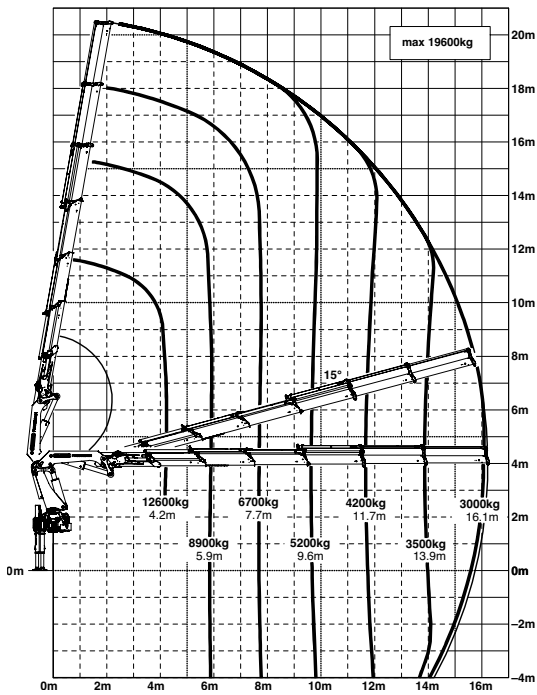
D



DIMENSIONS



E



- Designed and optimised for Non CE markets
- High value retention due to coating technology
- Practical and attractive due to Functional Design
- Increased operating times due to low-maintenance extension system
- Additional applications due to Power Link Plus

Technical specifications

EN 12999 HC1 HD4/B3

Max. lifting moment	57.8 mt/567.0 kNm	418160 ft.lbs
Max. lifting capacity	22200 kg/217.8 kN	48940 lbs
Max. hydraulic outreach	16.2 m	53' 2"
Max. manual outreach	23.1 m	75' 9"
Slewing angle	370°	
Slewing torque	6.6 mt/65.0 kNm	47940 ft.lbs
Stabiliser spread	7.8 m	25' 7"
Fitting space required (min./max.)	1.60 m/1.71 m	5' 3"/5' 7"
Width folded	2.55 m	8' 4"
Max. operating pressure	350 bar	5075 psi
Recommended pump capacity	from 70 l/min to 80 l/min	18.5 US gal./min 21.1 US gal./min
Dead weight (std.)	5130 kg	11310 lbs

KP-HPK62002MHL2+EN

Cranes shown in the leaflet are partially optional equipped and do not always correspond to the standard version. Country-specific regulations must be observed. Dimensions may vary. Subject to technical changes, errors and translation mistakes.